

MINI EXCAVATOR **SWE 08B**

Engine Power: **7.2 kW**

Machine Weight: **1 010 kg**

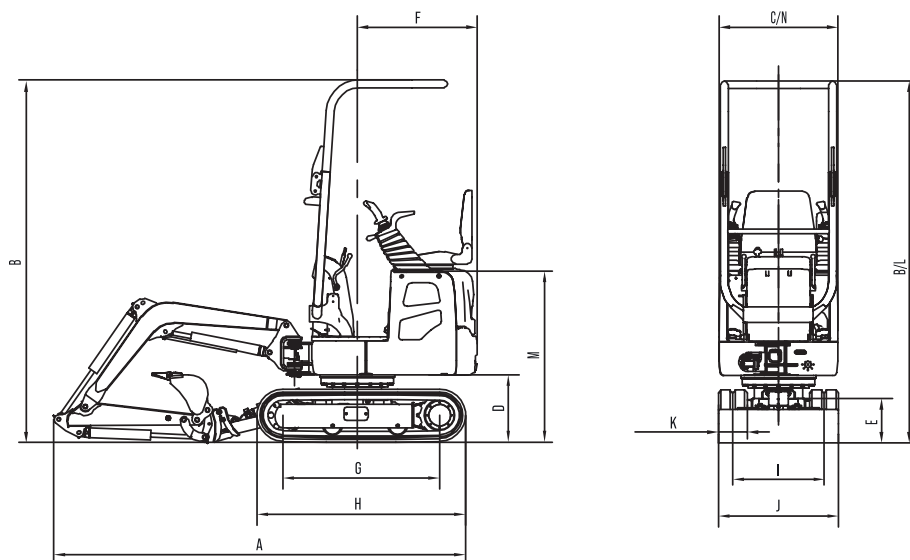




## TECHNICAL PARAMETERS

TYPE OF CAB		Canopy
BUCKET CAPACITY		0.022 m <sup>3</sup>
BUCKET WIDTH, STD.		320 mm
MACHINE WEIGHT		1010 kg
DIMENSIONS	Overall dimension (L × W × H)	2 640 × 750 × 2 250 mm
	A Total length	3 640 mm
	B Total height	2 250 mm
	C Total with	750 mm
	D Ground clearance of counter weight	418.5 mm
	E Minimum ground clearance	131 mm
	F Tail swing radius	750 mm
	G Track length on the ground	975 mm
	H Track length	1 299 mm
	I Track gauge	570/820 mm
	J Undercarriage width	750/1 000 mm
	K Track shoe width	180 mm
	L Cab height	2 250 mm
	M Height of engine hood	1 085 mm
	N Width of turntable	740 mm
	Boom length	1 350 mm
	Arm length	700 mm
ENGINE	Brand	YANMAR
	Model	2TNV70-PSU
	Type	Inline, 2 cylinders, water cooled, mechanical pump
	Emission rating	EU Stage V
	Displacement	0.57 L
	Output	7.2/2 400 kW/rpm
	Max torque	67.4/1 600 N*m/rpm
TRACK	Type	Rubber track
	Rubber shoe width	180 mm
UNDERCARRIAGE	Track length	1 299 mm
	Traveling speed (High/Low)	2.9/1.5 km/h
	Gradeability	30 deg
SWING SPEED		8.2 rpm
GROUND PRESSURE		24.5 kpa
HYDRAULIC PUMPS	Hydraulic pump type	2 gear pump
	Max displacement of hydraulic pump	2*9.6 L/min
	Hydraulic pressure of hydraulic pump	2*160 bar
	Pilot pump	Gear pump
	Max displacement of pilot pump	9.6 L/min
	Hydraulic pressure of pilot pump	160 bar
SWING MOTOR		Plunger motor
TRAVEL MOTOR		2-speed plunger motor
FUEL TANK CAPACITY		10 L
HYDRAULIC OIL TANK CAPACITY		9.5 L

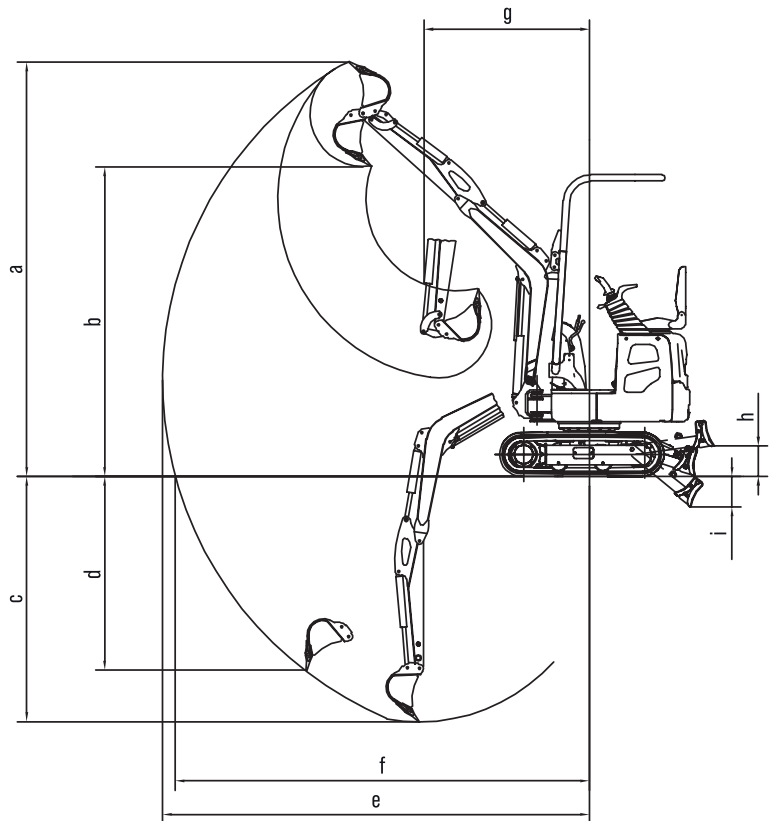
## DIMENSIONS



## WORKING RANGE

### WORKING RANGE & BREAKOUT FORCE

a	Max. cutting height	3 085 mm
b	Max. loading height	2 305 mm
c	Max. digging depth	1 825 mm
d	Max. vertical digging depth	1 440 mm
e	Max. digging reach	3 180 mm
f	Max. reach on ground	3 086 mm
g	Min. front swing radius	1 221 mm
h	Max dozer lifting height	225 mm
i	Max dozer cutting depth	225 mm
	Max digging force (Bucket)	9.4 kN
	Max digging force (Arm)	5.8 kN
	Boom swing angle (Left/Right)	73/53°

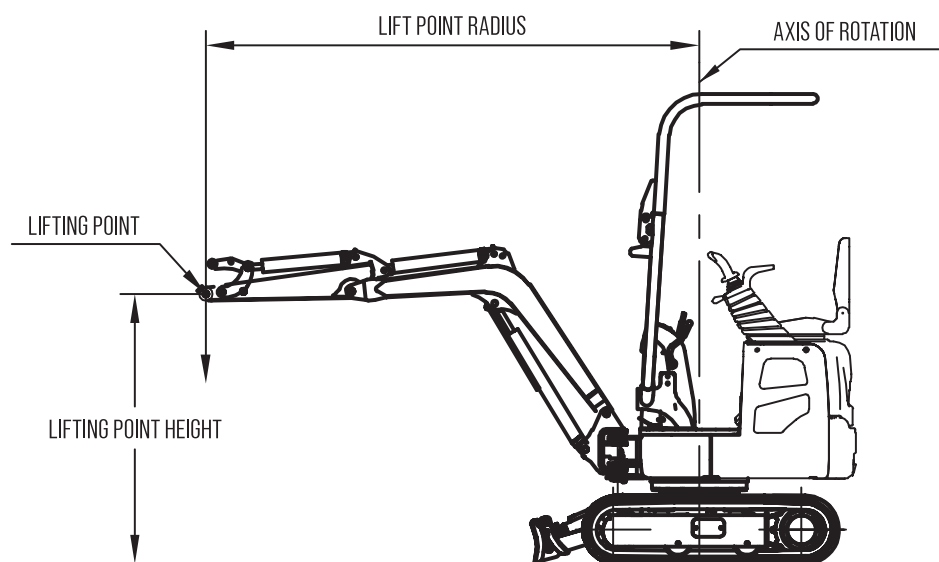


## LIFTING CAPACITY

Lift Point Height (m)	Lift Point Radius (MAX)		Lift Point Radius (2.0 m)		Lift Point Radius (1.0 m)	
	Over-front (kg)	Over-side (kg)	Over-front (kg)	Over-side (kg)	Over-front (kg)	Over-side (kg)
2.0	119.60*	86.6	129.20*	107.30	/	/
1.0	157.90*	61.9	135.50	94.90	416.40*	264.00
0.0	196.20*	70.1	224.90*	86.60	445.10*	202.20
-1.0	205.80*	127.9	/	/	287.10*	243.40

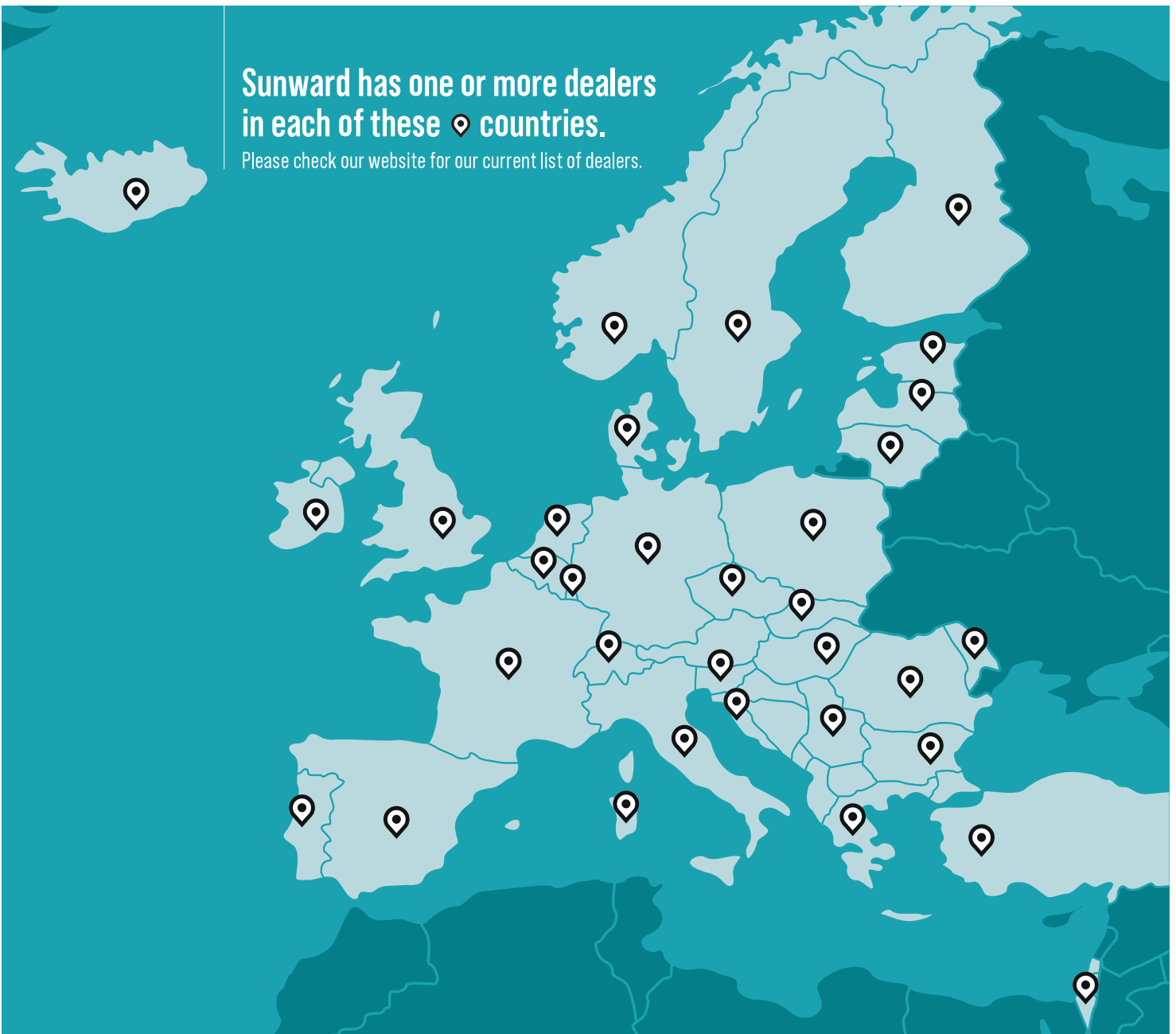
### Notes:

- Load with \* is limited by hydraulic capacity and based on ISO 10567. Rated loads do not exceed 87% of hydraulic capacity.
- Load without \* is limited by tipping load and based on ISO 10567. Rated loads do not exceed 75% of tipping capacity.
- The excavator bucket, hook, sling and other lifting accessories are not included in this table.



Sunward has one or more dealers  
in each of these  countries.

Please check our website for our current list of dealers.

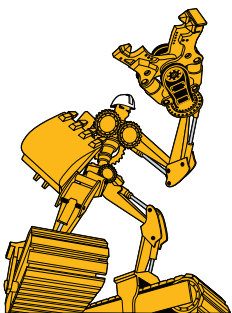


## SUNWARD EUROPE HEAVY INDUSTRY N.V

✉ Havenlaan 1  
B-3980 TESSENDERLO  
Belgium

☎ +32 (0) 11 43 46 66  
▶ info.eu@sunward.cc  
🌐 www.sunward.eu

## DEALER CONTACTS



### Sav. Iakovidis Bros S.A.

**Thessaloniki:**  
54628, 36Konstantinoupoleos str.  
Phone: +302310 55.62.66-7

**Athens:**  
19300, Aspropyrgos  
Phone: +30210 55.98.822

**web: [www.iakovidisbros.com](http://www.iakovidisbros.com)**  
**Email: [info@iakovidisbros.com](mailto:info@iakovidisbros.com)**